

FAG

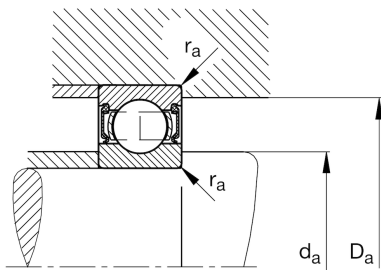
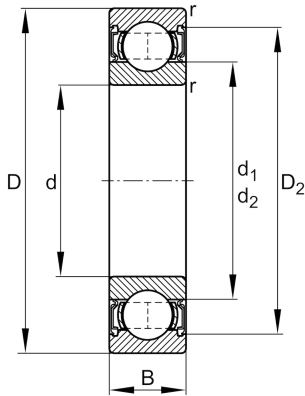
★ 62305-A-2RSR

Deep groove ball bearing

Schaeffler ID:
0596983810000Deep groove ball bearing 623..-A-2RSR,
single row, steel sheet metal cage

★ Preferred product

Technical information



Temperature range

T_{\min}	-20 °C	Operating temperature min.
T_{\max}	110 °C	Operating temperature max.
	0,316 kg	Weight

Main Dimensions & Performance Data

d	25 mm	Bore diameter
D	62 mm	Outside diameter
B	24 mm	Width
C_r	23.800 N	Basic dynamic load rating, radial
C_{0r}	11.500 N	Basic static load rating, radial
C_{ur}	790 N	Fatigue load limit, radial
n_G	7.300 1/min	Limiting speed

Dimensions

r_{\min}	1,1 mm	Minimum chamfer dimension
D_2	52,8 mm	Caliber diameter outer ring
d_1	33,6 mm	Shoulder diameter inner ring

Mounting dimensions

$d_{a \min}$	32 mm	Minimum diameter shaft shoulder
$D_{a \max}$	55 mm	Maximum diameter of housing shoulder
$r_{a \max}$	1,1 mm	Maximum fillet radius

Calculation factors

f_0	12,4	Calculation factor
-------	------	--------------------