

FAG

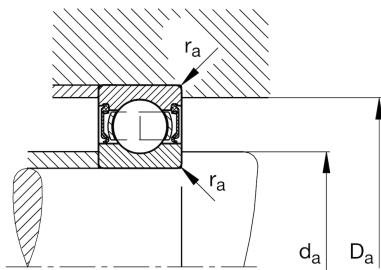
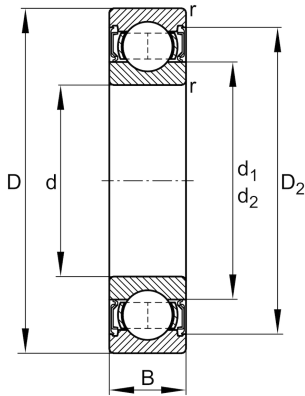
★ 62307-A-2RSR

Deep groove ball bearing

Schaeffler ID:
0648008650000Deep groove ball bearing 623..-A-2RSR,
single row, steel sheet metal cage

★ Preferred product

Technical information



Temperature range

| | | |
|------------|---------|----------------------------|
| T_{\min} | -20 °C | Operating temperature min. |
| T_{\max} | 110 °C | Operating temperature max. |
| | 0,65 kg | Weight |

Main Dimensions & Performance Data

| | | |
|----------|-------------|-----------------------------------|
| d | 35 mm | Bore diameter |
| D | 80 mm | Outside diameter |
| B | 31 mm | Width |
| C_r | 35.500 N | Basic dynamic load rating, radial |
| C_{0r} | 19.100 N | Basic static load rating, radial |
| C_{ur} | 1.320 N | Fatigue load limit, radial |
| n_G | 5.300 1/min | Limiting speed |

Dimensions

| | | |
|------------|---------|------------------------------|
| r_{\min} | 1,5 mm | Minimum chamfer dimension |
| D_2 | 70,1 mm | Caliber diameter outer ring |
| d_1 | 46,2 mm | Shoulder diameter inner ring |

Mounting dimensions

| | | |
|--------------|--------|--------------------------------------|
| $d_{a \min}$ | 44 mm | Minimum diameter shaft shoulder |
| $D_{a \max}$ | 71 mm | Maximum diameter of housing shoulder |
| $r_{a \max}$ | 1,5 mm | Maximum fillet radius |

Calculation factors

| | | |
|-------|------|--------------------|
| f_0 | 13,1 | Calculation factor |
|-------|------|--------------------|