



FAG

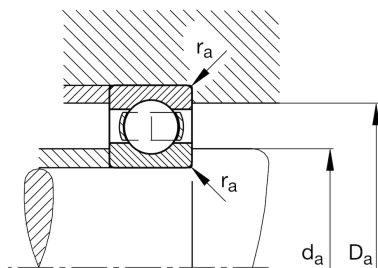
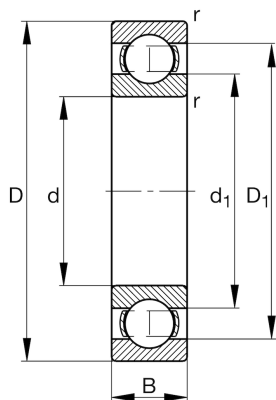
★ 6303

Deep groove ball bearing

Schaeffler ID:
0167227870000Deep groove ball bearing 63, single row,
steel sheet metal cage

★ Preferred product

Technical information



Temperature range

T_{\min}	-30 °C	Operating temperature min.
T_{\max}	120 °C	Operating temperature max.
	0,112 kg	Weight

Main Dimensions & Performance Data

d	17 mm	Bore diameter
D	47 mm	Outside diameter
B	14 mm	Width
C_r	14.400 N	Basic dynamic load rating, radial
C_{0r}	6.500 N	Basic static load rating, radial
C_{ur}	435 N	Fatigue load limit, radial
n_G	22.300 1/min	Limiting speed
n_{gr}	15.900 1/min	Reference speed

Dimensions

r_{\min}	1 mm	Minimum chamfer dimension
D_1	37,9 mm	Shoulder diameter outer ring
d_1	26,2 mm	Shoulder diameter inner ring

Mounting dimensions

$d_{a\min}$	22,6 mm	Minimum diameter shaft shoulder
$D_{a\max}$	41,4 mm	Maximum diameter of housing shoulder
$r_{a\max}$	1 mm	Maximum fillet radius

Calculation factors

f_0	12,2	Calculation factor
-------	------	--------------------