

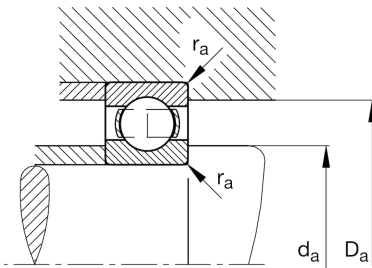
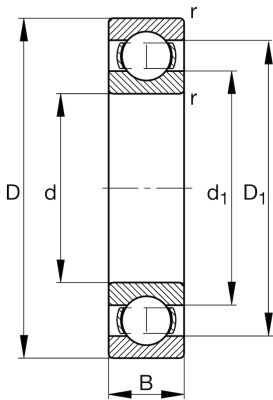
FAG★ **6328-M**

Deep groove ball bearing

Schaeffler ID:
0191120500000Deep groove ball bearing 63...-M, single
row, solid brass cage

★ Preferred product

Technical information



Temperature range

T_{\min}	-30 °C	Operating temperature min.
T_{\max}	200 °C	Operating temperature max.
	21,93 kg	Weight

Main Dimensions & Performance Data

d	140 mm	Bore diameter
D	300 mm	Outside diameter
B	62 mm	Width
C_r	270.000 N	Basic dynamic load rating, radial
C_{0r}	246.000 N	Basic static load rating, radial
C_{ur}	11.500 N	Fatigue load limit, radial
n_G	3.850 1/min	Limiting speed
n_{gr}	3.250 1/min	Reference speed

Dimensions

r_{\min}	4 mm	Minimum chamfer dimension
D_1	248,8 mm	Shoulder diameter outer ring
d_1	191,2 mm	Shoulder diameter inner ring

Mounting dimensions

$d_{a \min}$	157 mm	Minimum diameter shaft shoulder
$D_{a \max}$	283 mm	Maximum diameter of housing shoulder
$r_{a \max}$	3 mm	Maximum fillet radius

Calculation factors

f_0	13,6	Calculation factor
-------	------	--------------------