

FAG

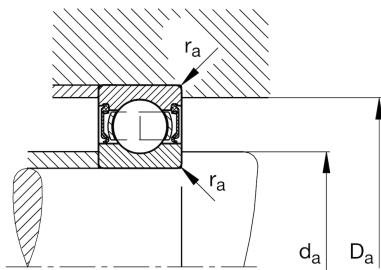
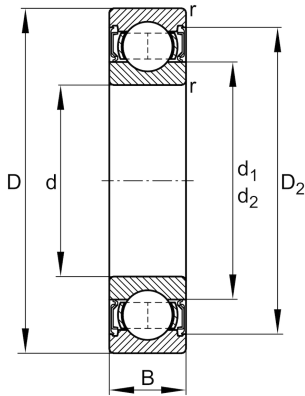
★ 6312-2RSR

Deep groove ball bearing

Schaeffler ID:
0167238300000Deep groove ball bearing 63...-2RSR,
single row, seals, steel sheet metal cage

★ Preferred product

Technical information



Temperature range

T_{\min}	-20 °C	Operating temperature min.
T_{\max}	110 °C	Operating temperature max.
	1,79 kg	Weight

Main Dimensions & Performance Data

d	60 mm	Bore diameter
D	130 mm	Outside diameter
B	31 mm	Width
C_r	89.000 N	Basic dynamic load rating, radial
C_{0r}	52.000 N	Basic static load rating, radial
C_{ur}	3.600 N	Fatigue load limit, radial
n_G	3.300 1/min	Limiting speed

Dimensions

r_{\min}	2,1 mm	Minimum chamfer dimension
D_2	113,1 mm	Caliber diameter outer ring
d_1	81,3 mm	Shoulder diameter inner ring

Mounting dimensions

$d_{a \min}$	72 mm	Minimum diameter shaft shoulder
$D_{a \max}$	118 mm	Maximum diameter of housing shoulder
$r_{a \max}$	2,1 mm	Maximum fillet radius

Calculation factors

f_0	13,2	Calculation factor
-------	------	--------------------