

FAG

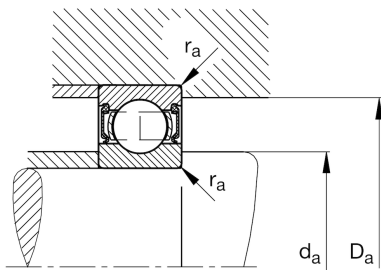
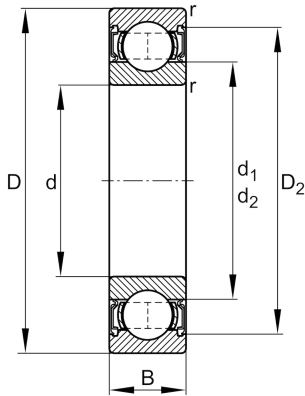
★ 6317-2RSR

Deep groove ball bearing

Schaeffler ID:
0167242400000Deep groove ball bearing 63...-2RSR,
single row, seals, steel sheet metal cage

★ Preferred product

Technical information



Temperature range

T_{\min}	-20 °C	Operating temperature min.
T_{\max}	110 °C	Operating temperature max.
	4,38 kg	Weight

Main Dimensions & Performance Data

d	85 mm	Bore diameter
D	180 mm	Outside diameter
B	41 mm	Width
C_r	141.000 N	Basic dynamic load rating, radial
C_{0r}	97.000 N	Basic static load rating, radial
C_{ur}	6.000 N	Fatigue load limit, radial
n_G	2.350 1/min	Limiting speed

Dimensions

r_{\min}	3 mm	Minimum chamfer dimension
D_2	154,9 mm	Caliber diameter outer ring
d_1	114 mm	Shoulder diameter inner ring

Mounting dimensions

$d_{a\min}$	99 mm	Minimum diameter shaft shoulder
$D_{a\max}$	166 mm	Maximum diameter of housing shoulder
$r_{a\max}$	2,5 mm	Maximum fillet radius

Calculation factors

f_0	13,3	Calculation factor
-------	------	--------------------