



FAG

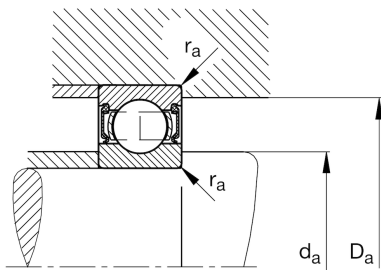
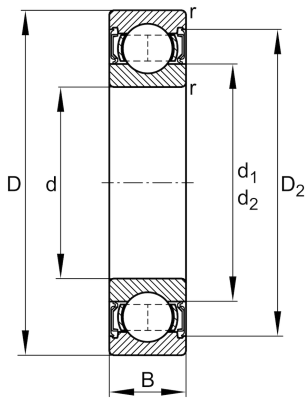
## ★ 6318-2RSR

Deep groove ball bearing

Schaeffler ID:  
0384057840000Deep groove ball bearing 63...-2RSR,  
single row, seals, steel sheet metal cage

★ Preferred product

## Technical information



## Temperature range

$T_{\min}$	-20 °C	Operating temperature min.
$T_{\max}$	110 °C	Operating temperature max.
	5,5 kg	Weight

## Main Dimensions &amp; Performance Data

d	90 mm	Bore diameter
D	190 mm	Outside diameter
B	43 mm	Width
$C_r$	142.000 N	Basic dynamic load rating, radial
$C_{0r}$	102.000 N	Basic static load rating, radial
$C_{ur}$	5.900 N	Fatigue load limit, radial
$n_G$	2.170 1/min	Limiting speed

## Dimensions

$r_{\min}$	3 mm	Minimum chamfer dimension
$D_2$	160,7 mm	Caliber diameter outer ring
$d_1$	123,3 mm	Shoulder diameter inner ring

## Mounting dimensions

$d_{a\min}$	104 mm	Minimum diameter shaft shoulder
$D_{a\max}$	176 mm	Maximum diameter of housing shoulder
$r_{a\max}$	2,5 mm	Maximum fillet radius

## Calculation factors

$f_0$	13,9	Calculation factor
-------	------	--------------------