

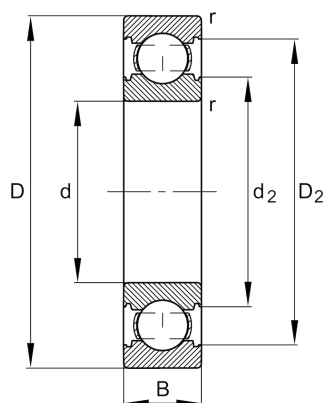
FAG

6305-C

Deep groove ball bearing

Schaeffler ID:
0791678530000Deep groove ball bearing 63...-C, single
row, Generation C, steel sheet metal cage

Technical information

**Temperature range**

T_{\min}	-30 °C	Operating temperature min.
T_{\max}	120 °C	Operating temperature max.
	0,215 kg	Weight

Main Dimensions & Performance Data

d	25 mm	Bore diameter
D	62 mm	Outside diameter
B	17 mm	Width
C_r	24.700 N	Basic dynamic load rating, radial
C_{0r}	11.500 N	Basic static load rating, radial
C_{ur}	800 N	Fatigue load limit, radial
n_G	17.800 1/min	Limiting speed
n_{gr}	13.500 1/min	Reference speed

Dimensions

r_{\min}	1,1 mm	Minimum chamfer dimension
D_2	54 mm	Caliber diameter outer ring
d_2	34 mm	Caliber diameter inner ring

Mounting dimensions

$d_{a \min}$	32 mm	Minimum diameter shaft shoulder
$D_{a \max}$	55 mm	Maximum diameter of housing shoulder
$r_{a \max}$	1,1 mm	Maximum fillet radius

Calculation factors

f_0	12,4	Calculation factor
-------	------	--------------------

