

FAG

## ★ NUP206-E-XL-TVP2

Cylindrical roller bearing

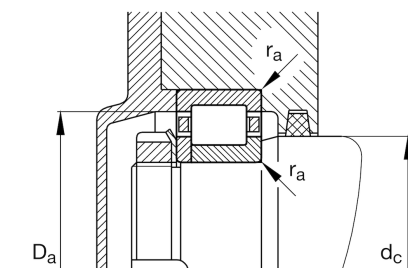
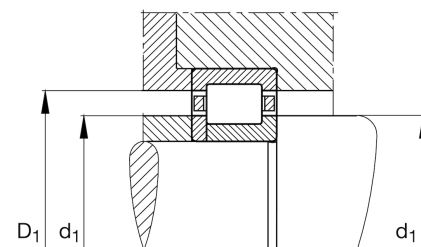
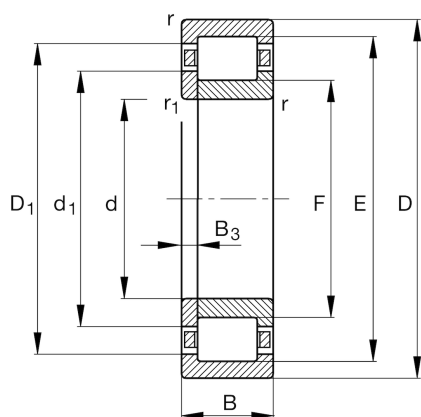
Schaeffler ID:  
0167407420000

★ Preferred product

Cylindrical roller bearing NUP.-E-XL-TVP2, with cage, single row, locating bearing, 2 ribs on outer ring, 1 rib on inner ring, rib washer internal, type NUP

X-life

## Technical information



## Temperature range

$T_{\min}$	-30 °C	Operating temperature min.
$T_{\max}$	120 °C	Operating temperature max.
	0,195 kg	Weight

## Main Dimensions &amp; Performance Data

d	30 mm	Bore diameter
D	62 mm	Outside diameter
B	16 mm	Width
$C_r$	46.000 N	Basic dynamic load rating, radial
$C_{0r}$	37.500 N	Basic static load rating, radial
$C_{ur}$	5.500 N	Fatigue load limit, radial
$n_G$	14.200 1/min	Limiting speed
$n_{gr}$	9.600 1/min	Reference speed

## Dimensions

$r_{\min}$	1 mm	Minimum chamfer dimension
$r_{1\min}$	0,6 mm	Minimum chamfer dimension
E	55,5 mm	Raceway diameter outer ring
F	37,5 mm	Raceway diameter inner ring
$B_3$	3 mm	Width of loose rib

## Mounting dimensions

$d_1$	41,1 mm	Maximum rib diameter inner ring
$D_{1\min}$	52,5 mm	Minimum rib diameter outer ring
$d_{a\min}$	34 mm	Minimum diameter shaft shoulder
$d_{c\min}$	44 mm	Minimum shaft shoulder
$D_{a\max}$	56 mm	Maximum diameter of housing shoulder
$r_{a\max}$	1 mm	Maximum recess radius