

FAG

★ NUP308-E-XL-TVP2

Cylindrical roller bearing

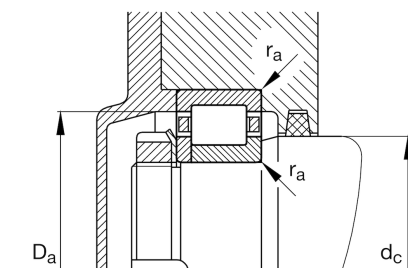
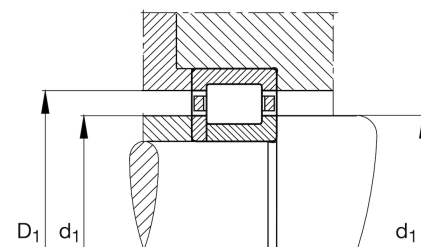
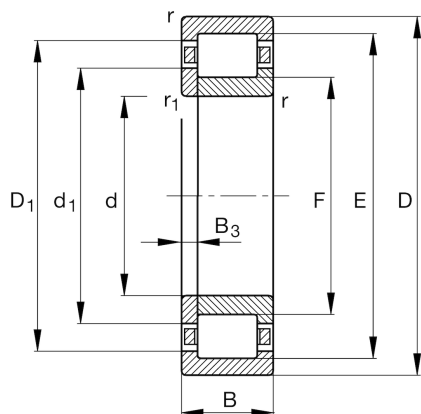
Schaeffler ID:
0167414800000

★ Preferred product

Cylindrical roller bearing NUP.-E-XL-TVP2, with cage, single row, locating bearing, 2 ribs on outer ring, 1 rib on inner ring, rib washer internal, type NUP

X-life

Technical information



Temperature range

T_{\min}	-30 °C	Operating temperature min.
T_{\max}	120 °C	Operating temperature max.
	0,63 kg	Weight

Main Dimensions & Performance Data

d	40 mm	Bore diameter
D	90 mm	Outside diameter
B	23 mm	Width
C_r	96.000 N	Basic dynamic load rating, radial
C_{0r}	79.000 N	Basic static load rating, radial
C_{ur}	13.700 N	Fatigue load limit, radial
n_G	9.500 1/min	Limiting speed
n_{gr}	7.100 1/min	Reference speed

Dimensions

r_{\min}	1,5 mm	Minimum chamfer dimension
$r_{1\min}$	1,5 mm	Minimum chamfer dimension
E	80 mm	Raceway diameter outer ring
F	52 mm	Raceway diameter inner ring
B_3	4 mm	Width of loose rib

Mounting dimensions

d_1	57,6 mm	Maximum rib diameter inner ring
$D_{1\min}$	75,9 mm	Minimum rib diameter outer ring
$d_{a\min}$	49 mm	Minimum diameter shaft shoulder
$d_{c\min}$	60 mm	Minimum shaft shoulder
$D_{a\max}$	81 mm	Maximum diameter of housing shoulder
$r_{a\max}$	1,5 mm	Maximum recess radius