

FAG

## ★ NUP316-E-XL-TVP2

Cylindrical roller bearing

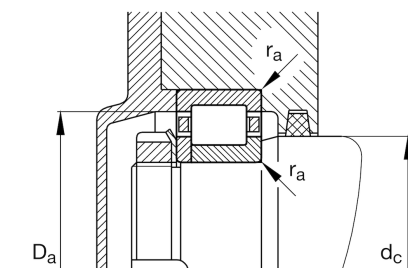
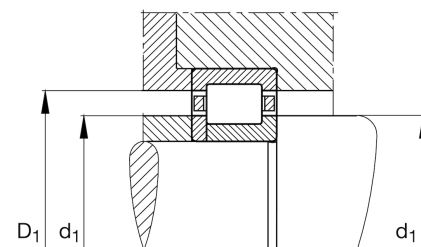
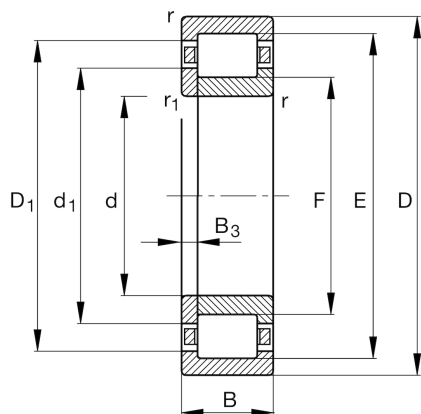
Schaeffler ID:  
0192552680000

★ Preferred product

Cylindrical roller bearing NUP.-E-XL-TVP2, with cage, single row, locating bearing, 2 ribs on outer ring, 1 rib on inner ring, rib washer internal, type NUP

X-life

## Technical information



## Temperature range

$T_{\min}$	-30 °C	Operating temperature min.
$T_{\max}$	120 °C	Operating temperature max.
	4,06 kg	Weight

## Main Dimensions &amp; Performance Data

d	80 mm	Bore diameter
D	170 mm	Outside diameter
B	39 mm	Width
$C_r$	300.000 N	Basic dynamic load rating, radial
$C_{0r}$	275.000 N	Basic static load rating, radial
$C_{ur}$	50.000 N	Fatigue load limit, radial
$n_G$	4.800 1/min	Limiting speed
$n_{gr}$	4.100 1/min	Reference speed

## Dimensions

$r_{\min}$	2,1 mm	Minimum chamfer dimension
$r_{1\min}$	2,1 mm	Minimum chamfer dimension
E	151 mm	Raceway diameter outer ring
F	101 mm	Raceway diameter inner ring
$B_3$	6 mm	Width of loose rib

## Mounting dimensions

$d_1$	110,4 mm	Maximum rib diameter inner ring
$D_{1\min}$	143,9 mm	Minimum rib diameter outer ring
$d_{a\min}$	92 mm	Minimum diameter shaft shoulder
$d_{c\min}$	114 mm	Minimum shaft shoulder
$D_{a\max}$	158 mm	Maximum diameter of housing shoulder
$r_{a\max}$	2,1 mm	Maximum recess radius