



FAG

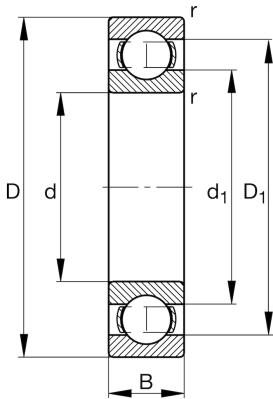
★ 16002-A

Deep groove ball bearing

Schaeffler ID:
0604501770000Deep groove ball bearing 160..-A, single
row, steel sheet metal cage

★ Preferred product

Technical information



Temperature range

T_{\min}	-30 °C	Operating temperature min.
T_{\max}	120 °C	Operating temperature max.
	0,024 kg	Weight

Main Dimensions & Performance Data

d	15 mm	Bore diameter
D	32 mm	Outside diameter
B	8 mm	Width
C_r	5.590 N	Basic dynamic load rating, radial
C_{0r}	2.840 N	Basic static load rating, radial
C_{ur}	191 N	Fatigue load limit, radial
n_G	28.500 1/min	Limiting speed
n_{gr}	20.000 1/min	Reference speed

Dimensions

r_{\min}	0,3 mm	Minimum chamfer dimension
D_1	26,8 mm	Shoulder diameter outer ring
d_1	20,5 mm	Shoulder diameter inner ring

Mounting dimensions

$d_{a\min}$	17 mm	Minimum diameter shaft shoulder
$D_{a\max}$	30 mm	Maximum diameter of housing shoulder
$r_{a\max}$	0,3 mm	Maximum fillet radius

Calculation factors

f_0	13,9	Calculation factor
-------	------	--------------------