



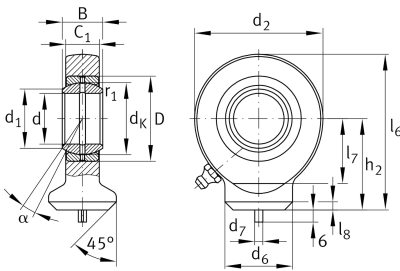
GK35-DO

Rod end

Schaeffler ID:
0066357920000

Hydraulic rod end, with circular welding face, requiring maintenance, sliding contact surface: steel/steel, DIN ISO 12240-4, dimension series E, type S, open design

Technical information



Main Dimensions & Performance Data

d	35 mm	Bore diameter bearing
D	55 mm	Outside diameter bearing
B	25 mm	Width inner ring,
C_r	79.900 N	Basic dynamic load rating, radial
C_{0r}	128.000 N	Basic static load rating, radial
G_r	0,037 - 0,1 mm	Radial Clearance
	0,978 kg	Weight

Dimensions

d_k	47 mm	Ball diameter
d_1	39,7 mm	Outer flange diameter inner ring
d_2	82 mm	Outer eye diameter
d_6	47 mm	Welding Shank Diameter
h_2	61 mm	Shank Length Welding Head
C_1	21 mm	Width of the rod end
α	6 °	Tilt angle
l_6	102 mm	Total length welding head
l_7	42 mm	Distance drilling with/shaft start
l_8	4 mm	Chamfer
d_7	4 mm	Centering pin diameter
d_{OT}	0 mm	Bore diameter bearing, upper tolerance
d_{UT}	-0,012 mm	Bore diameter bearing, lower tolerance
B_{OT}	0 mm	Width inner ring, upper tolerance
B_{UT}	-0,12 mm	Width inner ring, lower tolerance

Mounting dimensions

r_{1smin}	0,6 mm	Edge Spacing
-------------	--------	--------------

Temperature range

T _{min}	-60 °C	Operating temperature min.
T _{max}	200 °C	Operating temperature max.