



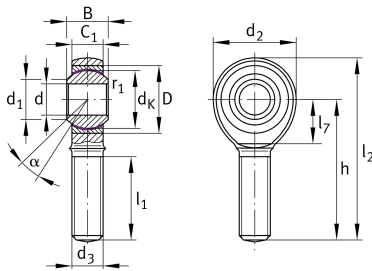
## GAKR30-PW

Rod end

Schaeffler ID:  
0066309360000

Rod end GAKR...-PW, external threads,  
maintenance-free

### Technical information



### Main Dimensions & Performance Data

|                 |           |                                   |
|-----------------|-----------|-----------------------------------|
| d               | 30 mm     | Bore diameter bearing             |
| d <sub>2</sub>  | 70 mm     | Outer eye diameter                |
| D               | 55 mm     | Outside diameter bearing          |
| l <sub>2</sub>  | 145 mm    | Total length external thread rod  |
| B               | 37 mm     | Width inner ring                  |
| C <sub>r</sub>  | 114.000 N | Basic dynamic load rating, radial |
| C <sub>0r</sub> | 95.900 N  | Basic static load rating, radial  |
|                 | 1,068 kg  | Weight                            |

### Dimensions

|                 |              |  |
|-----------------|--------------|--|
| d <sub>K</sub>  | 50,8 mm      | Ball diameter                          |
| d <sub>1</sub>  | 34,8 mm      | Outer flange diameter inner ring       |
| d <sub>3</sub>  | M30x2        | Thread size                            |
| h               | 110 mm       | Shank Length External thread rod       |
| C <sub>1</sub>  | 25 mm        | Width of the rod end                   |
| α               | 17 °         | Tilt angle                             |
| l <sub>1</sub>  | 66 mm        | Thread length external thread          |
| l <sub>7</sub>  | 37 mm        | Distance drilling with/shaft start     |
| G <sub>r</sub>  | 0 - 0,035 mm | Radial Clearance                       |
| d <sub>T</sub>  | H7 mm        | Bore diameter bearing, tolerance       |
| d <sub>OT</sub> | 0,021 mm     | Bore diameter bearing, upper tolerance |
| d <sub>UT</sub> | 0 mm         | Bore diameter bearing, lower tolerance |
| B <sub>OT</sub> | 0 mm         | Width inner ring, upper tolerance      |
| B <sub>UT</sub> | -0,12 mm     | Width inner ring, lower tolerance      |

### Mounting dimensions

|                    |        |              |
|--------------------|--------|--------------|
| r <sub>1smin</sub> | 0,3 mm | Edge Spacing |
|--------------------|--------|--------------|

**Temperature range**

|                  |        |                            |
|------------------|--------|----------------------------|
| T <sub>min</sub> | -50 °C | Operating temperature min. |
| T <sub>max</sub> | 200 °C | Operating temperature max. |