



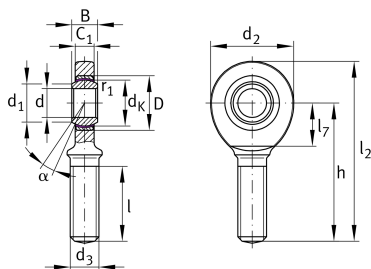
## GAR25-UK

### Rod end

Schaeffler ID:  
0066306930000

Rod end with external thread, right hand thread; maintenance-free, sliding layer: PTFE composite, DIN ISO 12240-4, dimension series E, type M, inner ring curved surface with hard chromium coating, open design

### Technical information



### Main Dimensions & Performance Data

d	25 mm	Bore diameter bearing
d <sub>2</sub>	64 mm	Outer eye diameter
D	42 mm	Outside diameter bearing
l <sub>2</sub>	126 mm	Total length external thread rod
B	20 mm	Width inner ring
C <sub>r</sub>	51.100 N	Basic dynamic load rating, radial
C <sub>0r</sub>	105.000 N	Basic static load rating, radial
	0,006 kg	Weight

### Dimensions

d <sub>K</sub>	35,5 mm	Ball diameter
d <sub>1</sub>	29,3 mm	Outer flange diameter inner ring
d <sub>3</sub>	M24x2	Thread size
h	94 mm	Shank Length External thread rod
C <sub>1</sub>	17 mm	Width of the rod end
α	7 °	Tilt angle
l <sub>1</sub>	53 mm	Thread length external thread
l <sub>7</sub>	32 mm	Distance drilling with/shaft start
G <sub>r</sub>	0 - 0,05 mm	Radial Clearance
d <sub>OT</sub>	0 mm	Bore diameter bearing, upper tolerance
d <sub>UT</sub>	-0,01 mm	Bore diameter bearing, lower tolerance
B <sub>OT</sub>	0 mm	Width inner ring, upper tolerance
B <sub>UT</sub>	-0,12 mm	Width inner ring, lower tolerance

### Mounting dimensions

r <sub>1smin</sub>	0,6 mm	Edge Spacing
--------------------	--------	--------------

### Temperature range

T <sub>min</sub>	-50 °C	Operating temperature min.
T <sub>max</sub>	200 °C	Operating temperature max.