

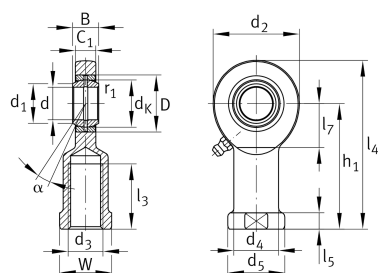
GIR30-DO

Rod end

Schaeffler ID:
0066355390000

Rod end with internal thread, right hand thread, requiring maintenance, sliding contact surface: steel/steel, DIN ISO 12240-4, dimension series E, type F, open design

Technical information



Main Dimensions & Performance Data

d	30 mm	Bore diameter bearing
D	47 mm	Outside diameter bearing
B	22 mm	Width inner ring
C _r	62.300 N	Basic dynamic load rating, radial
C _{0r}	119.000 N	Basic static load rating, radial
G _r	0,037 - 0,1 mm	Radial Clearance
	0,978 kg	Weight

Dimensions

d _K	40,7 mm	Ball diameter
d ₁	34,2 mm	Outer flange diameter inner ring
d ₂	73 mm	Outer eye diameter
d ₃	M30x2	Thread size
d ₄	40 mm	Shank diameter
h ₁	110 mm	Shank Length Internal thread head
α	6 °	Tilt angle
l ₃	56 mm	Thread length Internal thread
l ₄	146,5 mm	Total length internal thread head
l ₅	15 mm	length rod end shank
l ₇	37 mm	Distance drilling with/shaft start
d ₅	50 mm	Shank diameter, large
C ₁	19 mm	Width of the rod end
r _{1smin}	0,6 mm	Edge Spacing
W	41 mm	Width Across Flat
d _{OT}	0 mm	Bore diameter bearing, upper tolerance
d _{UT}	-0,01 mm	Bore diameter bearing, lower tolerance
B _{OT}	0 mm	Width inner ring, upper tolerance
B _{UT}	-0,12 mm	Width inner ring, lower tolerance

Temperature range

T _{min}	-60 °C	Operating temperature min.
T _{max}	200 °C	Operating temperature max.