



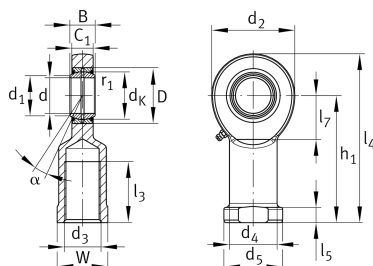
GIR35-DO-2RS

Rod end

Schaeffler ID:
0066355550000

Rod end with internal thread, right hand thread, requiring maintenance, sliding contact surface: steel/steel, DIN ISO 12240-4, dimension series E, type F, sealed

Technical information



Main Dimensions & Performance Data

| | | |
|----------|----------------|-----------------------------------|
| d | 35 mm | Bore diameter bearing |
| D | 55 mm | Outside diameter bearing |
| B | 25 mm | Width inner ring |
| C_r | 79.900 N | Basic dynamic load rating, radial |
| C_{0r} | 159.000 N | Basic static load rating, radial |
| G_r | 0,037 - 0,1 mm | Radial Clearance |
| | 1,43 kg | Weight |

Dimensions

| | | |
|-------------|-----------|--|
| d_K | 47 mm | Ball diameter |
| d_1 | 39,7 mm | Outer flange diameter inner ring |
| d_2 | 82 mm | Outer eye diameter |
| d_3 | M36x3 | Thread size |
| d_4 | 47 mm | Shank diameter |
| h_1 | 125 mm | Shank Length Internal thread head |
| α | 6 ° | Tilt angle |
| l_3 | 60 mm | Thread length Internal thread |
| l_4 | 166 mm | Total length internal thread head |
| l_5 | 15 mm | length rod end shank |
| l_7 | 42 mm | Distance drilling with/shaft start |
| d_5 | 58 mm | Shank diameter, large |
| C_1 | 21 mm | Width of the rod end |
| r_{1smin} | 0,6 mm | Edge Spacing |
| W | 50 mm | Width Across Flat |
| d_{OT} | 0 mm | Bore diameter bearing, upper tolerance |
| d_{UT} | -0,012 mm | Bore diameter bearing, lower tolerance |
| B_{OT} | 0 mm | Width inner ring, upper tolerance |
| B_{UT} | -0,12 mm | Width inner ring, lower tolerance |

Temperature range

| | | |
|------------------|--------|----------------------------|
| T _{min} | -30 °C | Operating temperature min. |
| T _{max} | 130 °C | Operating temperature max. |