



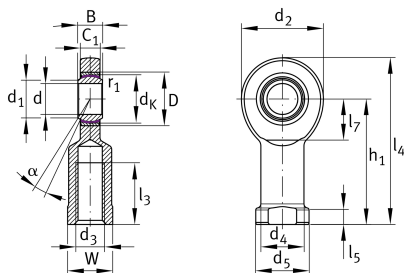
GIR8-UK

Rod end

Schaeffler ID:
0066357090000

Rod end with internal thread, maintenance-free, sliding layer: PTFE composite, DIN ISO 12240-4, dimension series E, type F, inner ring curved surface with hard chromium coating, open design, left hand thread

Technical information



Main Dimensions & Performance Data

d	8 mm	Bore diameter bearing
D	16 mm	Outside diameter bearing
B	8 mm	Width inner ring
C _r	5.850 N	Basic dynamic load rating, radial
C _{0r}	16.000 N	Basic static load rating, radial
	38 g	Weight

Dimensions

d _K	13 mm	Ball diameter
d ₁	10,2 mm	Outer flange diameter inner ring
d ₂	24 mm	Outer eye diameter
d ₃	M8	Thread size
d ₄	12,5 mm	Shank diameter
h ₁	36 mm	Shank Length Internal thread head
C ₁	6 mm	Width of the rod end
α	15 °	Tilt angle
l ₃	15 mm	Thread length Internal thread
l ₄	48 mm	Total length internal thread head
l ₅	5 mm	length rod end shank
l ₇	14 mm	Distance drilling with/shaft start
d ₅	16 mm	Shank diameter, large
W	14 mm	Width Across Flat
G _r	0 - 0,032 mm	Radial Clearance
d _{OT}	0 mm	Bore diameter bearing, upper tolerance
d _{UT}	-0,008 mm	Bore diameter bearing, lower tolerance
B _{OT}	0 mm	Width inner ring, upper tolerance
B _{UT}	-0,12 mm	Width inner ring, lower tolerance

Mounting dimensions

r _{1smin}	0,3 mm	Edge Spacing
--------------------	--------	--------------

Temperature range

T _{min}	-50 °C	Operating temperature min.
T _{max}	200 °C	Operating temperature max.