

RATR25-XL

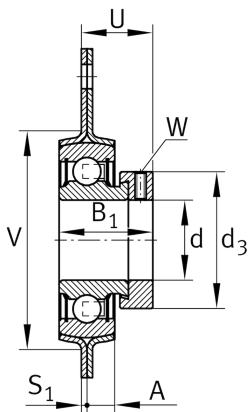
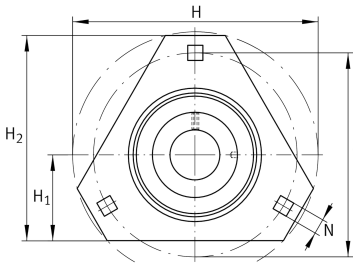
Flanged housing unit

Schaeffler ID:
0008281140000

Housing units RATR, three-bolt flanged housing units, sheet steel, eccentric locking collar, P seals

X-life

Technical information



Main Dimensions & Performance Data

d	25 mm	Bore diameter
H ₂	80,5 mm	Height flange
H	95,3 mm	Height flange
H	95,3 mm	Flange width
U	25,5 mm	Total height unit
C _r	14.000 N	Basic dynamic load rating, radial
C _{0r}	7.800 N	Basic static load rating, radial
C _{ur}	410 N	Fatigue load limit, radial
C _{0rG}	3.650 N	Load carrying capacity (housing)
C _g	3.650 N	Load carrying capacity (housing)
	0,304 kg	Weight

Dimensions

A	8,7 mm	Height housing
	2	Number of housings
	FLAN52-MSTR	Housing
H ₁	34,9 mm	Distance shaft axis
	RAE25-XL-NPP-B	Bearing designation
S	2 mm	Thickness of flange
V	60 mm	Shoulder diameter housing

Mounting dimensions

J	76 mm	Distance fixing bore
J	76 mm	Pitch circle diameter (holes)
N	8,7 mm	Fixing square
n	3	Number of screwing holes