



IMAGE  
COMING SOON



RCJT20-XL-N-FA125

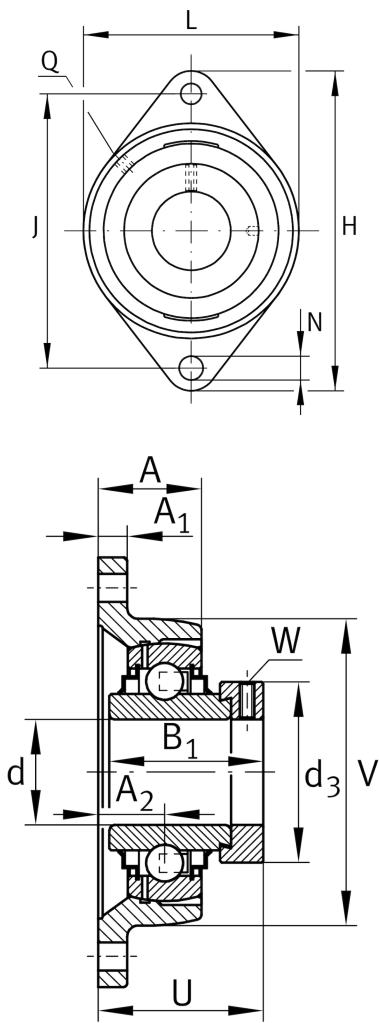
Flanged housing unit

Schaeffler ID:  
0096280880000

Housing units RCJT...FA125, two-bolt  
flanged housing units, cast iron, eccentric  
locking collar, R seals, with anti-corrosion  
protection

X-life

Technical information



Main Dimensions & Performance Data

d	20 mm	Bore diameter
L	61 mm	Flange width
H	112 mm	Height flange
U	45,6 mm	Total height unit
C <sub>r</sub>	13.600 N	Basic dynamic load rating, radial
C <sub>0r</sub>	6.600 N	Basic static load rating, radial
C <sub>ur</sub>	345 N	Fatigue load limit, radial
	0,48 kg	Weight

Dimensions

A	28 mm	Height housing
	1	Number of housings
A <sub>1</sub>	10 mm	Thickness of flange
A <sub>2</sub>	19 mm	Distance raceway
	CJT04	Housing
	GE20-XL-KRR-B- FA125	Bearing designation
	KASK04	Protecting cap
V	61 mm	Shoulder diameter housing
Q	M6	Connection thread lubrication
d <sub>3</sub>	33 mm	Outside diameter eccentric locking collar

Mounting dimensions

J	90 mm	Distance fixing bore
N	11.5 mm	Fixing bore
n	2	Number of screwing holes