

FAG

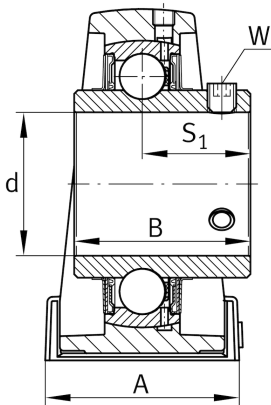
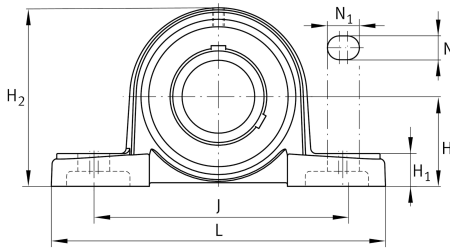
UCP211

Plummer block housing unit

Schaeffler ID:
0811467280000

Plummer block housing units UCP, cast iron housing, with long base, radial insert ball bearing with grub screws in inner ring, RSR seals

Technical information

**Main Dimensions & Performance Data**

d	55 mm	Bore diameter
L	219 mm	Length total
H ₂	126 mm	Height
	3,592 kg	Weight

Dimensions

H	63,5 mm	Distance shaft axis
	P211	Housing
	UC211	Bearing designation
A	60 mm	Width (base)
H ₁	23 mm	Height (base)
B	55,6 mm	Width
S ₁	33,4 mm	Distance of raceway to locking collar
Q	M6	Connection thread lubrication

Mounting dimensions

J	171 mm	Distance fixing bore
N	20 mm	Width (slot)
N ₁	25 mm	Length (slot)