



RTUEY20-XL

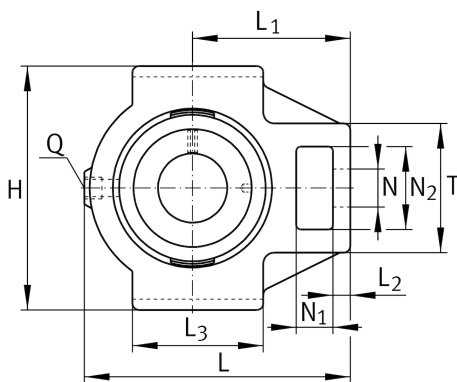
Take-up housing unit

Schaeffler ID:
0008789520000

Take-up housing units RTUEY, cast iron housing, radial insert ball bearing with grub screws in inner ring, R seals

X-life

Technical information



Main Dimensions & Performance Data

d	20 mm	Bore diameter
H	90 mm	Height
L	94,5 mm	Length total
	0,84 kg	Weight

Dimensions

L ₁	60 mm	Distance shaft axis
	TUE04	Housing
	GYE20-XL-KRR-B	Bearing designation
L ₂	9 mm	Length fixed link
L ₃	50 mm	Length guidance groove
A	37 mm	Width housing fixing side
N ₁	18 mm	Width recess
N ₂	32 mm	Height recess
T	51 mm	Height housing fixing side
Q	Rp1/8	Connection thread lubrication
A ₂	25 mm	Width housing

Mounting dimensions

A ₁	12 mm	Width guidance groove
	H13	Width guidance groove clearance
H ₁	76 mm	Distance guidance grooves
	0,15 mm	Upper distance guidance groove tolerance
	-0,15 mm	Lower distance guidance groove tolerance
N	19 mm	Fixing bore

