

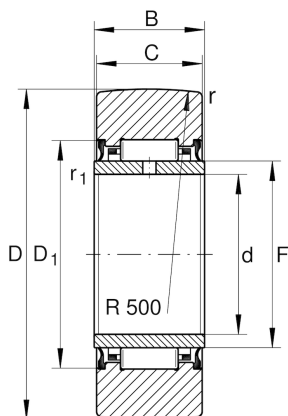
## NA22/6-2RSR

Yoke type track roller

Schaeffler ID:  
0000275530000

Yoke type track rollers NA22...-2RSR,  
without axial guidance, lip seals on both  
sides

### Technical information



#### Main Dimensions & Performance Data

D	19 mm	Outside diameter
F	10 mm	Raceway diameter inner ring
C	11,8 mm	Width, outer ring
$C_{r w}$	3.900 N	Basic dynamic load rating, radial
$C_{0 r w}$	3.700 N	Basic static load rating, radial
$C_{u r w}$	495 N	Fatigue load limit, radial
$n_{D G}$	9.000 1/min	Speed on permanent grease lubrication
	19,6 g	Weight

#### Dimensions

d	6 mm	Bore diameter
B	12 mm	Width, inner ring
$D_{1 \min}$	16 mm	Minimum mounting dimension
$r_{\min}$	0,3 mm	Minimum chamfer dimension
$r_{1 \min}$	0,3 mm	Minimum chamfer dimension
R	500 mm	Radius of outer ring outside profile