



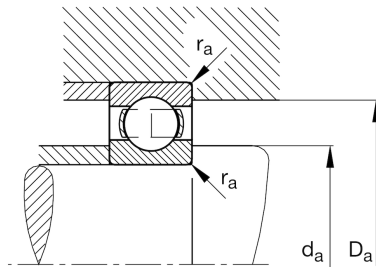
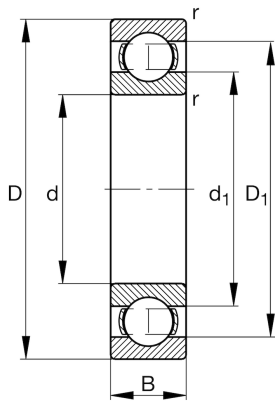
FAG

**6221**

Deep groove ball bearing

Schaeffler ID:  
0167218370000Deep groove ball bearing 62, single row,  
steel sheet metal cage

## Technical information

**Main Dimensions & Performance Data**

d	105 mm	Bore diameter
D	190 mm	Outside diameter
B	36 mm	Width
$C_r$	141.000 N	Basic dynamic load rating, radial
$C_{0r}$	105.000 N	Basic static load rating, radial
$C_{ur}$	5.800 N	Fatigue load limit, radial
$n_G$	4.750 1/min	Limiting speed
$n_{gr}$	4.650 1/min	Reference speed
	3,88 kg	Weight

**Dimensions**

$r_{min}$	2,1 mm	Minimum chamfer dimension
$D_1$	163,2 mm	Shoulder diameter outer ring
$d_1$	131,9 mm	Shoulder diameter inner ring

**Mounting dimensions**

$d_{a min}$	117 mm	Minimum diameter shaft shoulder
$D_{a max}$	178 mm	Maximum diameter of housing shoulder
$r_{a max}$	2,1 mm	Maximum fillet radius

**Calculation factors**

$f_0$	14,4	Calculation factor
-------	------	--------------------

**Temperature range**

$T_{min}$	-30 °C	Operating temperature min.
$T_{max}$	150 °C	Operating temperature max.