

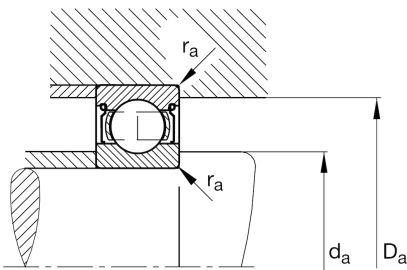
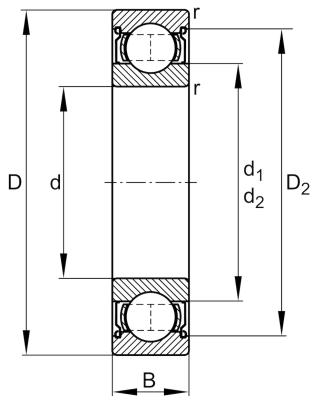
FAG

6221-2Z

Deep groove ball bearing

Schaeffler ID:
0191059910000Deep groove ball bearing 62...-2Z, single
row, shields, steel sheet metal cage

Technical information

**Main Dimensions & Performance Data**

d	105 mm	Bore diameter
D	190 mm	Outside diameter
B	36 mm	Width
C_r	141.000 N	Basic dynamic load rating, radial
C_{0r}	105.000 N	Basic static load rating, radial
C_{ur}	5.800 N	Fatigue load limit, radial
n_G	4.000 1/min	Limiting speed
n_{gr}	4.650 1/min	Reference speed
	3,99 kg	Weight

Dimensions

r_{min}	2,1 mm	Minimum chamfer dimension
D_2	168,1 mm	Caliber diameter outer ring
d_1	131,5 mm	Shoulder diameter inner ring

Mounting dimensions

d_{amin}	117 mm	Minimum diameter shaft shoulder
D_{amax}	178 mm	Maximum diameter of housing shoulder
r_{amax}	2,1 mm	Maximum fillet radius

Calculation factors

f_0	14,4	Calculation factor
-------	------	--------------------

Temperature range

T_{min}	-20 °C	Operating temperature min.
T_{max}	120 °C	Operating temperature max.