

## NE50-XL-KRR-B

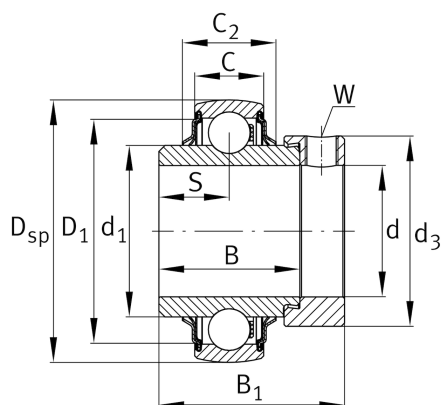
Radial insert ball bearing

Schaeffler ID:  
0008747790000

Radial insert ball bearings NE..-KRR-B, spherical outer ring, location by eccentric locking collar, R seals on both sides

X-life

### Technical information



### Main Dimensions & Performance Data

d	50 mm	Bore diameter
D <sub>SP</sub>	110 mm	Outside diameter
B	49,2 mm	Width
B <sub>1</sub>	66,75 mm	Locking collar total width
n <sub>G Grease</sub>	7.300 1/min	Limiting speed for grease lubrication
C <sub>r</sub>	66.000 N	Basic dynamic load rating, radial
C <sub>0r</sub>	38.000 N	Basic static load rating, radial
C <sub>ur</sub>	1.970 N	Fatigue load limit, radial
	1,82 kg	Weight

### Dimensions

C	29 mm	Width, outer ring
S	24,6 mm	Distance raceway
d <sub>1</sub>	68,8 mm	Rib diameter inner ring
d <sub>3</sub>	75,8 mm	Outside diameter locking collar/locknut
W	5 mm	Width of flats

### Calculation factors

f <sub>0</sub>	13,1	Calculation factor
----------------	------	--------------------