

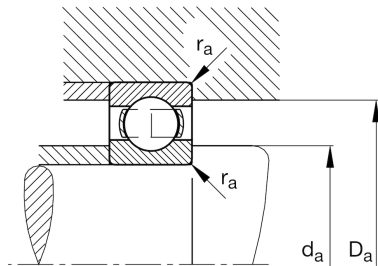
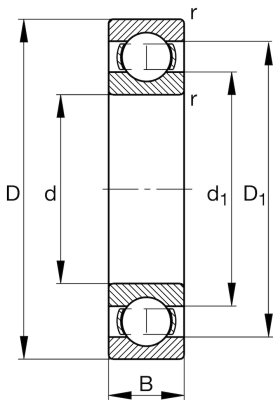
FAG

**6018-M**

Deep groove ball bearing

Schaeffler ID:  
0384043110000Deep groove ball bearing 60..-M, single  
row, solid brass cage

## Technical information

**Temperature range**

|            |         |                            |
|------------|---------|----------------------------|
| $T_{\min}$ | -30 °C  | Operating temperature min. |
| $T_{\max}$ | 150 °C  | Operating temperature max. |
|            | 1,42 kg | Weight                     |

**Main Dimensions & Performance Data**

|          |             |                                   |
|----------|-------------|-----------------------------------|
| d        | 90 mm       | Bore diameter                     |
| D        | 140 mm      | Outside diameter                  |
| B        | 24 mm       | Width                             |
| $C_r$    | 62.000 N    | Basic dynamic load rating, radial |
| $C_{0r}$ | 49.500 N    | Basic static load rating, radial  |
| $C_{ur}$ | 3.000 N     | Fatigue load limit, radial        |
| $n_G$    | 8.600 1/min | Limiting speed                    |
| $n_{gr}$ | 5.600 1/min | Reference speed                   |

**Dimensions**

|            |          |                              |
|------------|----------|------------------------------|
| $r_{\min}$ | 1,5 mm   | Minimum chamfer dimension    |
| $D_1$      | 124,5 mm | Shoulder diameter outer ring |
| $d_1$      | 106,6 mm | Shoulder diameter inner ring |

**Mounting dimensions**

|              |        |                                      |
|--------------|--------|--------------------------------------|
| $d_{a \min}$ | 97 mm  | Minimum diameter shaft shoulder      |
| $D_{a \max}$ | 133 mm | Maximum diameter of housing shoulder |
| $r_{a \max}$ | 1,5 mm | Maximum fillet radius                |

**Calculation factors**

|       |      |                    |
|-------|------|--------------------|
| $f_0$ | 15,5 | Calculation factor |
|-------|------|--------------------|