

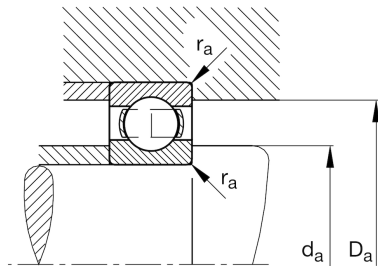
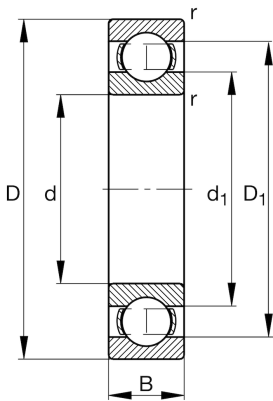
FAG

6020-M

Deep groove ball bearing

Schaeffler ID:
0383820320000Deep groove ball bearing 60..-M, single
row, solid brass cage

Technical information

**Temperature range**

T_{\min}	-30 °C	Operating temperature min.
T_{\max}	150 °C	Operating temperature max.
	1,535 kg	Weight

Main Dimensions & Performance Data

d	100 mm	Bore diameter
D	150 mm	Outside diameter
B	24 mm	Width
C_r	64.000 N	Basic dynamic load rating, radial
C_{0r}	54.000 N	Basic static load rating, radial
C_{ur}	3.050 N	Fatigue load limit, radial
n_G	7.900 1/min	Limiting speed
n_{gr}	5.100 1/min	Reference speed

Dimensions

r_{\min}	1,5 mm	Minimum chamfer dimension
D_1	134,1 mm	Shoulder diameter outer ring
d_1	116,6 mm	Shoulder diameter inner ring

Mounting dimensions

$d_{a\min}$	107 mm	Minimum diameter shaft shoulder
$D_{a\max}$	143 mm	Maximum diameter of housing shoulder
$r_{a\max}$	1,5 mm	Maximum fillet radius

Calculation factors

f_0	15,8	Calculation factor
-------	------	--------------------