

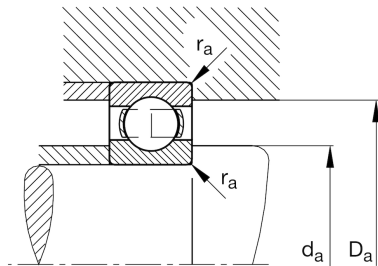
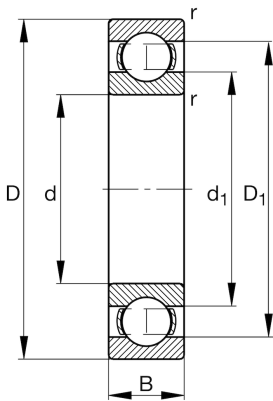
FAG

61836-MB

Deep groove ball bearing

Schaeffler ID:
0384761930000Deep groove ball bearing 618..-MB, single
row, solid brass cage

Technical information

**Temperature range**

T_{min}	-30 °C	Operating temperature min.
T_{max}	150 °C	Operating temperature max.
	2,014 kg	Weight

Main Dimensions & Performance Data

d	180 mm	Bore diameter
D	225 mm	Outside diameter
B	22 mm	Width
C_r	66.000 N	Basic dynamic load rating, radial
C_{0r}	76.000 N	Basic static load rating, radial
C_{ur}	2.950 N	Fatigue load limit, radial
n_G	5.100 1/min	Limiting speed
n_{gr}	2.750 1/min	Reference speed

Dimensions

r_{min}	1,1 mm	Minimum chamfer dimension
D_1	210,78 mm	Shoulder diameter outer ring
d_1	194,4 mm	Shoulder diameter inner ring

Mounting dimensions

$d_{a min}$	186 mm	Minimum diameter shaft shoulder
$D_{a max}$	219 mm	Maximum diameter of housing shoulder
$r_{a max}$	1 mm	Maximum fillet radius

Calculation factors

f_0	16,1	Calculation factor
-------	------	--------------------