

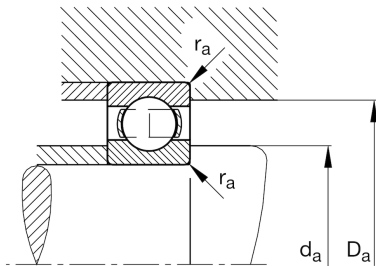
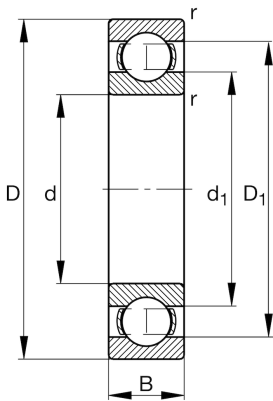
FAG

61864-M

Deep groove ball bearing

Schaeffler ID:
0190979050000Deep groove ball bearing 618..-M, single
row, solid brass cage

Technical information

**Temperature range**

T_{\min}	-30 °C	Operating temperature min.
T_{\max}	200 °C	Operating temperature max.
	11,2 kg	Weight

Main Dimensions & Performance Data

d	320 mm	Bore diameter
D	400 mm	Outside diameter
B	38 mm	Width
C_r	154.000 N	Basic dynamic load rating, radial
C_{0r}	213.000 N	Basic static load rating, radial
C_{ur}	6.500 N	Fatigue load limit, radial
n_G	2.750 1/min	Limiting speed
n_{gr}	1.710 1/min	Reference speed

Dimensions

r_{\min}	2,1 mm	Minimum chamfer dimension
D_1	373,8 mm	Shoulder diameter outer ring
d_1	347 mm	Shoulder diameter inner ring

Mounting dimensions

$d_{a\min}$	330,2 mm	Minimum diameter shaft shoulder
$D_{a\max}$	389,8 mm	Maximum diameter of housing shoulder
$r_{a\max}$	2,1 mm	Maximum fillet radius

Calculation factors

f_0	16	Calculation factor
-------	----	--------------------