

FAG

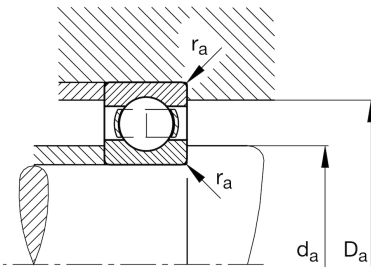
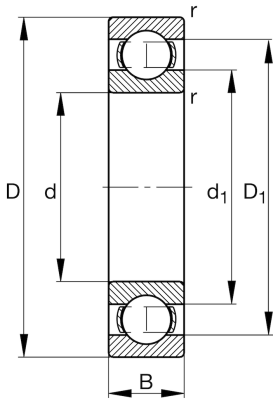
★ 6326

Deep groove ball bearing

Schaeffler ID:
0389105350000Deep groove ball bearing 63, single row,
steel sheet metal cage

★ Preferred product

Technical information



Temperature range

T_{\min}	-30 °C	Operating temperature min.
T_{\max}	200 °C	Operating temperature max.
	15,255 kg	Weight

Main Dimensions & Performance Data

d	130 mm	Bore diameter
D	280 mm	Outside diameter
B	58 mm	Width
C_r	244.000 N	Basic dynamic load rating, radial
C_{0r}	214.000 N	Basic static load rating, radial
C_{ur}	10.100 N	Fatigue load limit, radial
n_G	3.200 1/min	Limiting speed
n_{gr}	3.500 1/min	Reference speed

Dimensions

r_{\min}	4 mm	Minimum chamfer dimension
D_1	231,3 mm	Shoulder diameter outer ring
d_1	178,9 mm	Shoulder diameter inner ring

Mounting dimensions

$d_{a\min}$	147 mm	Minimum diameter shaft shoulder
$D_{a\max}$	263 mm	Maximum diameter of housing shoulder
$r_{a\max}$	3 mm	Maximum fillet radius

Calculation factors

f_0	13,5	Calculation factor
-------	------	--------------------