



FAG

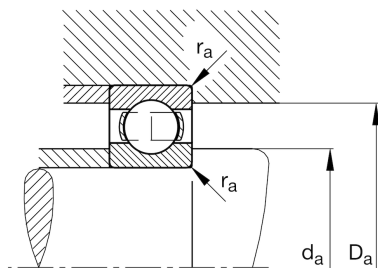
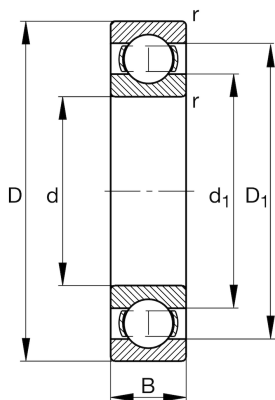
★ 61819-Y

Deep groove ball bearing

Schaeffler ID:
0096198100000Deep groove ball bearing 618..-Y, single
row, brass sheet metal cage

★ Preferred product

Technical information



Temperature range

| | | |
|------------|---------|----------------------------|
| T_{\min} | -30 °C | Operating temperature min. |
| T_{\max} | 150 °C | Operating temperature max. |
| | 0,31 kg | Weight |

Main Dimensions & Performance Data

| | | |
|----------|--------------|-----------------------------------|
| d | 95 mm | Bore diameter |
| D | 120 mm | Outside diameter |
| B | 13 mm | Width |
| C_r | 21.000 N | Basic dynamic load rating, radial |
| C_{0r} | 21.300 N | Basic static load rating, radial |
| C_{ur} | 1.230 N | Fatigue load limit, radial |
| n_G | 10.000 1/min | Limiting speed |
| n_{gr} | 4.350 1/min | Reference speed |

Dimensions

| | | |
|------------|----------|------------------------------|
| r_{\min} | 1 mm | Minimum chamfer dimension |
| D_1 | 112 mm | Shoulder diameter outer ring |
| d_1 | 103,2 mm | Shoulder diameter inner ring |

Mounting dimensions

| | | |
|-------------|----------|--------------------------------------|
| $d_{a\min}$ | 99,6 mm | Minimum diameter shaft shoulder |
| $D_{a\max}$ | 115,4 mm | Maximum diameter of housing shoulder |
| $r_{a\max}$ | 1 mm | Maximum fillet radius |

Calculation factors

| | | |
|-------|------|--------------------|
| f_0 | 16,1 | Calculation factor |
|-------|------|--------------------|