

FAG

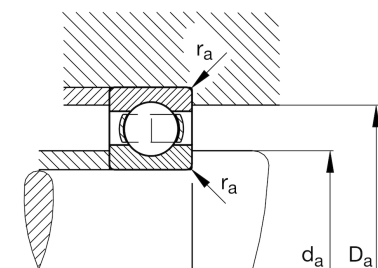
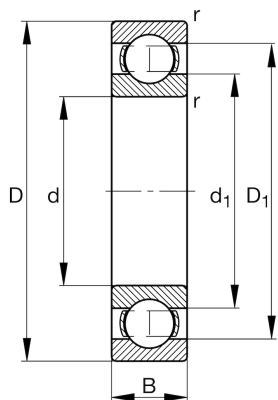
★ 61914

Deep groove ball bearing

Schaeffler ID:
0097867160000Deep groove ball bearing 619, single row,
steel sheet metal cage

★ Preferred product

Technical information



Temperature range

T_{\min}	-30 °C	Operating temperature min.
T_{\max}	150 °C	Operating temperature max.
	0,34 kg	Weight

Main Dimensions & Performance Data

d	70 mm	Bore diameter
D	100 mm	Outside diameter
B	16 mm	Width
C_r	25.000 N	Basic dynamic load rating, radial
C_{0r}	21.200 N	Basic static load rating, radial
C_{ur}	1.200 N	Fatigue load limit, radial
n_G	9.500 1/min	Limiting speed
n_{gr}	6.400 1/min	Reference speed

Dimensions

r_{\min}	1 mm	Minimum chamfer dimension
D_1	90,3 mm	Shoulder diameter outer ring
d_1	79,7 mm	Shoulder diameter inner ring

Mounting dimensions

$d_{a\min}$	74,6 mm	Minimum diameter shaft shoulder
$D_{a\max}$	95,4 mm	Maximum diameter of housing shoulder
$r_{a\max}$	1 mm	Maximum fillet radius

Calculation factors

f_0	16,4	Calculation factor
-------	------	--------------------