

FAG

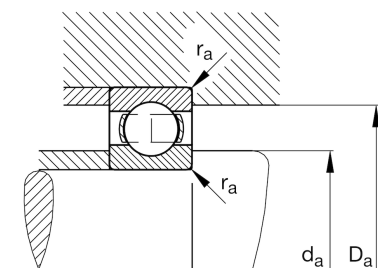
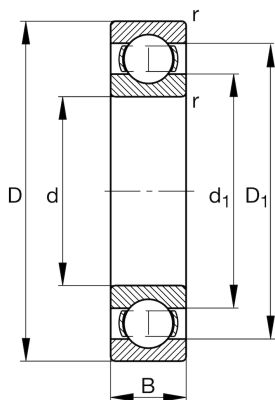
★ 16015

Deep groove ball bearing

Schaeffler ID:
0167011600000Deep groove ball bearing 160, single row,
steel sheet metal cage

★ Preferred product

Technical information



Temperature range

T_{\min}	-30 °C	Operating temperature min.
T_{\max}	150 °C	Operating temperature max.
	0,005 kg	Weight

Main Dimensions & Performance Data

d	75 mm	Bore diameter
D	115 mm	Outside diameter
B	13 mm	Width
C_r	30.500 N	Basic dynamic load rating, radial
C_{0r}	27.000 N	Basic static load rating, radial
C_{ur}	1.330 N	Fatigue load limit, radial
n_G	8.400 1/min	Limiting speed
n_{gr}	4.900 1/min	Reference speed

Dimensions

r_{\min}	0,6 mm	Minimum chamfer dimension
D_1	101,2 mm	Shoulder diameter outer ring
d_1	88,7 mm	Shoulder diameter inner ring

Mounting dimensions

$d_{a\min}$	78,2 mm	Minimum diameter shaft shoulder
$D_{a\max}$	111,8 mm	Maximum diameter of housing shoulder
$r_{a\max}$	0,6 mm	Maximum fillet radius

Calculation factors

f_0	16,5	Calculation factor
-------	------	--------------------