



FAG

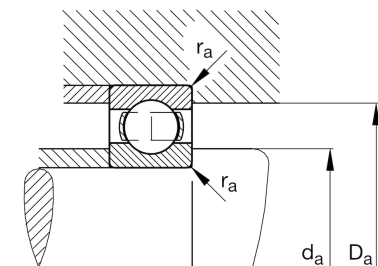
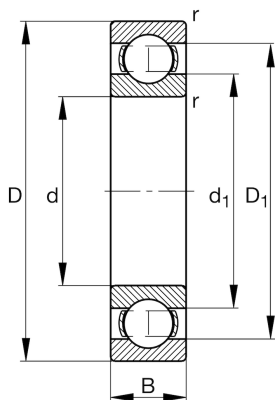
## ★ 16018

Deep groove ball bearing

Schaeffler ID:  
0167011940000Deep groove ball bearing 160, single row,  
steel sheet metal cage

★ Preferred product

## Technical information



## Temperature range

$T_{\min}$	-30 °C	Operating temperature min.
$T_{\max}$	150 °C	Operating temperature max.
	0,866 kg	Weight

## Main Dimensions &amp; Performance Data

d	90 mm	Bore diameter
D	140 mm	Outside diameter
B	16 mm	Width
$C_r$	44.000 N	Basic dynamic load rating, radial
$C_{0r}$	39.500 N	Basic static load rating, radial
$C_{ur}$	2.080 N	Fatigue load limit, radial
$n_G$	6.800 1/min	Limiting speed
$n_{gr}$	4.400 1/min	Reference speed

## Dimensions

$r_{\min}$	1 mm	Minimum chamfer dimension
$D_1$	122,7 mm	Shoulder diameter outer ring
$d_1$	107,6 mm	Shoulder diameter inner ring

## Mounting dimensions

$d_{a\min}$	94,6 mm	Minimum diameter shaft shoulder
$D_{a\max}$	135,4 mm	Maximum diameter of housing shoulder
$r_{a\max}$	1 mm	Maximum fillet radius

## Calculation factors

$f_0$	16,4	Calculation factor
-------	------	--------------------