**FAG**★ **6015-2Z**

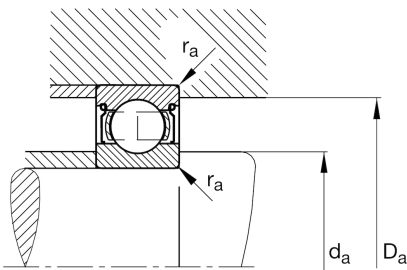
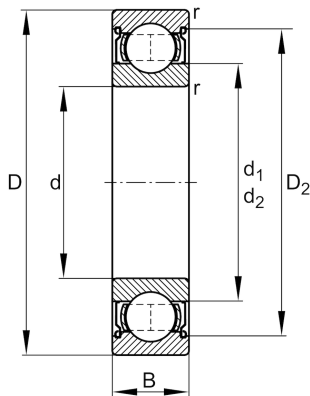
Deep groove ball bearing

Schaeffler ID:
0167181000000

Deep groove ball bearing 60...-2Z, single row, shields, steel sheet metal cage

★ Preferred product

Technical information

**Temperature range**

T_{\min}	-20 °C	Operating temperature min.
T_{\max}	120 °C	Operating temperature max.
	0,676 kg	Weight

Main Dimensions & Performance Data

d	75 mm	Bore diameter
D	115 mm	Outside diameter
B	20 mm	Width
C_r	42.000 N	Basic dynamic load rating, radial
C_{0r}	33.500 N	Basic static load rating, radial
C_{ur}	2.020 N	Fatigue load limit, radial
n_G	6.900 1/min	Limiting speed
n_{gr}	6.300 1/min	Reference speed

Dimensions

r_{\min}	1,1 mm	Minimum chamfer dimension
D_2	105,3 mm	Caliber diameter outer ring
d_1	88,1 mm	Shoulder diameter inner ring

Mounting dimensions

$d_{a\min}$	81 mm	Minimum diameter shaft shoulder
$D_{a\max}$	109 mm	Maximum diameter of housing shoulder
$r_{a\max}$	1 mm	Maximum fillet radius

Calculation factors

f_0	15,8	Calculation factor
-------	------	--------------------