



FAG

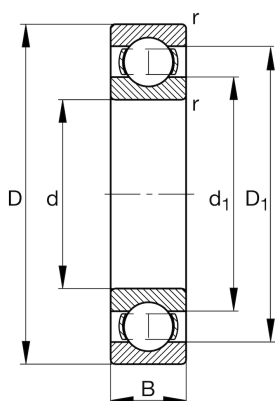
★ 6018

Deep groove ball bearing

Schaeffler ID:
0167182670000Deep groove ball bearing 60, single row,
steel sheet metal cage

★ Preferred product

Technical information



Temperature range

T_{\min}	-30 °C	Operating temperature min.
T_{\max}	150 °C	Operating temperature max.
	1,21 kg	Weight

Main Dimensions & Performance Data

d	90 mm	Bore diameter
D	140 mm	Outside diameter
B	24 mm	Width
C_r	62.000 N	Basic dynamic load rating, radial
C_{0r}	49.500 N	Basic static load rating, radial
C_{ur}	3.000 N	Fatigue load limit, radial
n_G	6.600 1/min	Limiting speed
n_{gr}	5.600 1/min	Reference speed

Dimensions

r_{\min}	1,5 mm	Minimum chamfer dimension
D_1	124,5 mm	Shoulder diameter outer ring
d_1	106,6 mm	Shoulder diameter inner ring

Mounting dimensions

$d_{a\min}$	97 mm	Minimum diameter shaft shoulder
$D_{a\max}$	133 mm	Maximum diameter of housing shoulder
$r_{a\max}$	1,5 mm	Maximum fillet radius

Calculation factors

f_0	15,5	Calculation factor
-------	------	--------------------