



FAG

★ 6018-2Z

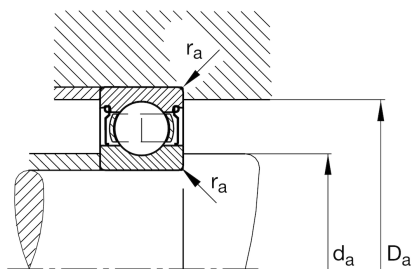
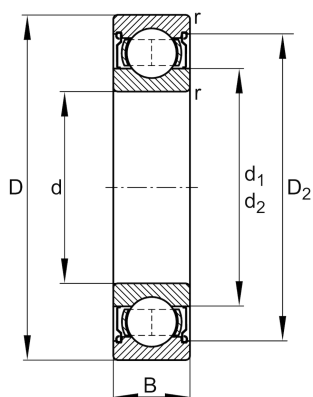
Deep groove ball bearing

Schaeffler ID:
0167182830000

Deep groove ball bearing 60...-2Z, single row, shields, steel sheet metal cage

★ Preferred product

Technical information



Temperature range

| | | |
|------------|---------|----------------------------|
| T_{\min} | -20 °C | Operating temperature min. |
| T_{\max} | 120 °C | Operating temperature max. |
| | 1,23 kg | Weight |

Main Dimensions & Performance Data

| | | |
|----------|-------------|-----------------------------------|
| d | 90 mm | Bore diameter |
| D | 140 mm | Outside diameter |
| B | 24 mm | Width |
| C_r | 62.000 N | Basic dynamic load rating, radial |
| C_{0r} | 49.500 N | Basic static load rating, radial |
| C_{ur} | 3.000 N | Fatigue load limit, radial |
| n_G | 5.600 1/min | Limiting speed |
| n_{gr} | 5.600 1/min | Reference speed |

Dimensions

| | | |
|------------|----------|------------------------------|
| r_{\min} | 1,5 mm | Minimum chamfer dimension |
| D_2 | 126,8 mm | Caliber diameter outer ring |
| d_1 | 106,2 mm | Shoulder diameter inner ring |

Mounting dimensions

| | | |
|-------------|--------|--------------------------------------|
| $d_{a\min}$ | 97 mm | Minimum diameter shaft shoulder |
| $D_{a\max}$ | 133 mm | Maximum diameter of housing shoulder |
| $r_{a\max}$ | 1,5 mm | Maximum fillet radius |

Calculation factors

| | | |
|-------|------|--------------------|
| f_0 | 15,5 | Calculation factor |
|-------|------|--------------------|