

FAG

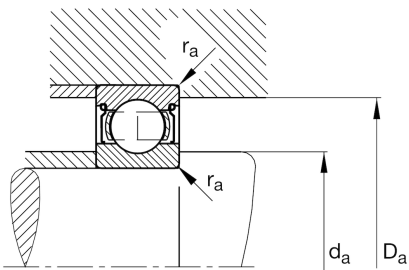
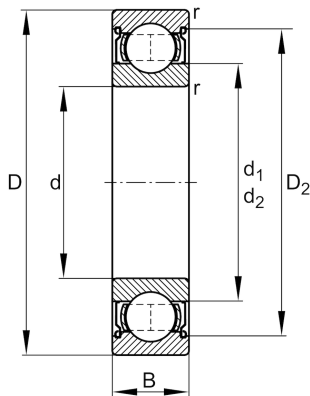
## ★ 6022-2Z

Deep groove ball bearing

Schaeffler ID:  
0167184530000Deep groove ball bearing 60...-2Z, single  
row, shields, steel sheet metal cage

★ Preferred product

## Technical information



## Temperature range

$T_{\min}$	-20 °C	Operating temperature min.
$T_{\max}$	120 °C	Operating temperature max.
	2,11 kg	Weight

## Main Dimensions &amp; Performance Data

d	110 mm	Bore diameter
D	170 mm	Outside diameter
B	28 mm	Width
$C_r$	85.000 N	Basic dynamic load rating, radial
$C_{0r}$	71.000 N	Basic static load rating, radial
$C_{ur}$	3.550 N	Fatigue load limit, radial
$n_G$	4.550 1/min	Limiting speed
$n_{gr}$	4.850 1/min	Reference speed

## Dimensions

$r_{\min}$	2 mm	Minimum chamfer dimension
$D_2$	155 mm	Caliber diameter outer ring
$d_1$	128,7 mm	Shoulder diameter inner ring

## Mounting dimensions

$d_{a\min}$	118,8 mm	Minimum diameter shaft shoulder
$D_{a\max}$	161,2 mm	Maximum diameter of housing shoulder
$r_{a\max}$	2 mm	Maximum fillet radius

## Calculation factors

$f_0$	15,7	Calculation factor
-------	------	--------------------