



FAG

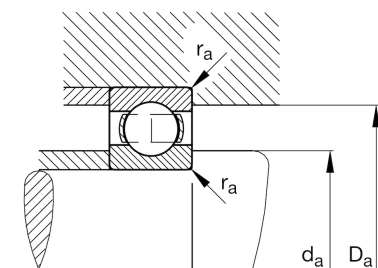
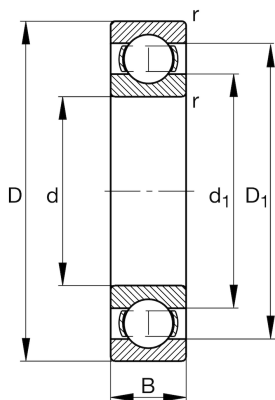
## ★ 6030

## Deep groove ball bearing

Schaeffler ID:  
0167186580000Deep groove ball bearing 60, single row,  
steel sheet metal cage

★ Preferred product

## Technical information



## Temperature range

$T_{\min}$	-30 °C	Operating temperature min.
$T_{\max}$	150 °C	Operating temperature max.
	4,12 kg	Weight

## Main Dimensions &amp; Performance Data

d	150 mm	Bore diameter
D	225 mm	Outside diameter
B	35 mm	Width
$C_r$	131.000 N	Basic dynamic load rating, radial
$C_{0r}$	124.000 N	Basic static load rating, radial
$C_{ur}$	5.600 N	Fatigue load limit, radial
$n_G$	3.950 1/min	Limiting speed
$n_{gr}$	3.850 1/min	Reference speed

## Dimensions

$r_{\min}$	2,1 mm	Minimum chamfer dimension
$D_1$	201,4 mm	Shoulder diameter outer ring
$d_1$	174,4 mm	Shoulder diameter inner ring

## Mounting dimensions

$d_{a\min}$	160,2 mm	Minimum diameter shaft shoulder
$D_{a\max}$	214,8 mm	Maximum diameter of housing shoulder
$r_{a\max}$	2,1 mm	Maximum fillet radius

## Calculation factors

$f_0$	16	Calculation factor
-------	----	--------------------