



FAG

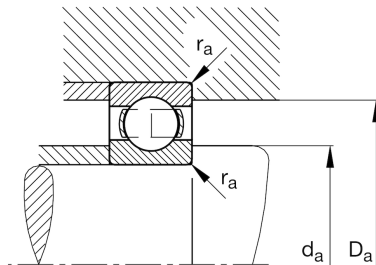
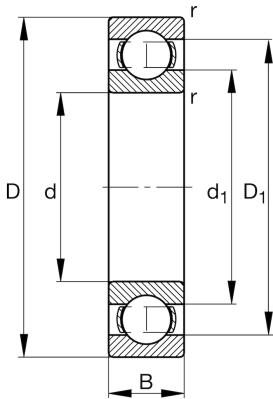
★ 6209

Deep groove ball bearing

Schaeffler ID:
0167205200000Deep groove ball bearing 62, single row,
steel sheet metal cage

★ Preferred product

Technical information



Temperature range

T_{\min}	-30 °C	Operating temperature min.
T_{\max}	120 °C	Operating temperature max.
	0,404 kg	Weight

Main Dimensions & Performance Data

d	45 mm	Bore diameter
D	85 mm	Outside diameter
B	19 mm	Width
C_r	33.000 N	Basic dynamic load rating, radial
C_{0r}	20.300 N	Basic static load rating, radial
C_{ur}	1.400 N	Fatigue load limit, radial
n_G	11.600 1/min	Limiting speed
n_{gr}	8.900 1/min	Reference speed

Dimensions

r_{\min}	1,1 mm	Minimum chamfer dimension
D_1	71,8 mm	Shoulder diameter outer ring
d_1	57,2 mm	Shoulder diameter inner ring

Mounting dimensions

$d_{a \min}$	52 mm	Minimum diameter shaft shoulder
$D_{a \max}$	78 mm	Maximum diameter of housing shoulder
$r_{a \max}$	1,1 mm	Maximum fillet radius

Calculation factors

f_0	14,3	Calculation factor
-------	------	--------------------