



FAG

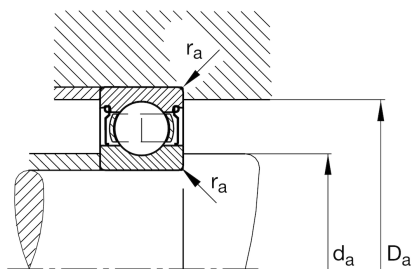
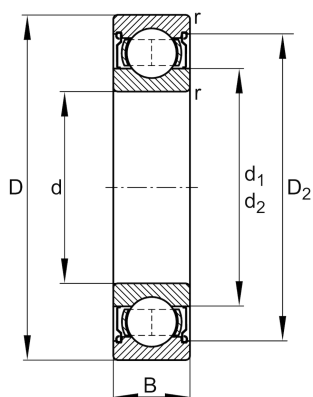
★ 6301-2Z

Deep groove ball bearing

Schaeffler ID:
0167226710000Deep groove ball bearing 63...-2Z, single
row, shields, steel sheet metal cage

★ Preferred product

Technical information



Temperature range

T_{\min}	-20 °C	Operating temperature min.
T_{\max}	120 °C	Operating temperature max.
	59,8 g	Weight

Main Dimensions & Performance Data

d	12 mm	Bore diameter
D	37 mm	Outside diameter
B	12 mm	Width
C_r	10.300 N	Basic dynamic load rating, radial
C_{0r}	4.200 N	Basic static load rating, radial
C_{ur}	290 N	Fatigue load limit, radial
n_G	24.000 1/min	Limiting speed
n_{gr}	20.000 1/min	Reference speed

Dimensions

r_{\min}	1 mm	Minimum chamfer dimension
D_2	31,4 mm	Caliber diameter outer ring
d_1	19,5 mm	Shoulder diameter inner ring

Mounting dimensions

$d_{a\min}$	17,6 mm	Minimum diameter shaft shoulder
$D_{a\max}$	31,4 mm	Maximum diameter of housing shoulder
$r_{a\max}$	1 mm	Maximum fillet radius

Calculation factors

f_0	11,1	Calculation factor
-------	------	--------------------