



FAG

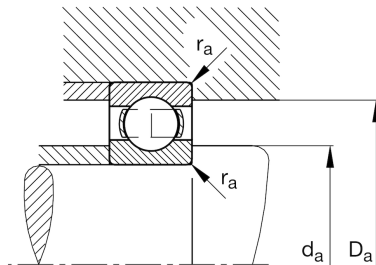
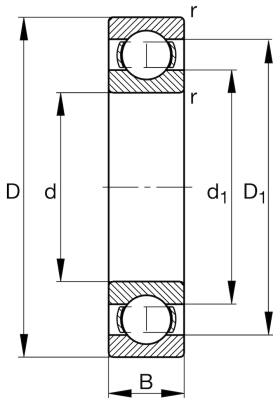
★ 6304

Deep groove ball bearing

Schaeffler ID:
0167228410000Deep groove ball bearing 63, single row,
steel sheet metal cage

★ Preferred product

Technical information



Temperature range

T_{\min}	-30 °C	Operating temperature min.
T_{\max}	120 °C	Operating temperature max.
	0,144 kg	Weight

Main Dimensions & Performance Data

d	20 mm	Bore diameter
D	52 mm	Outside diameter
B	15 mm	Width
C_r	16.900 N	Basic dynamic load rating, radial
C_{0r}	7.900 N	Basic static load rating, radial
C_{ur}	540 N	Fatigue load limit, radial
n_G	19.800 1/min	Limiting speed
n_{gr}	14.400 1/min	Reference speed

Dimensions

r_{\min}	1,1 mm	Minimum chamfer dimension
D_1	41,9 mm	Shoulder diameter outer ring
d_1	30,3 mm	Shoulder diameter inner ring

Mounting dimensions

$d_{a\min}$	27 mm	Minimum diameter shaft shoulder
$D_{a\max}$	45 mm	Maximum diameter of housing shoulder
$r_{a\max}$	1,1 mm	Maximum fillet radius

Calculation factors

f_0	12,4	Calculation factor
-------	------	--------------------