



FAG

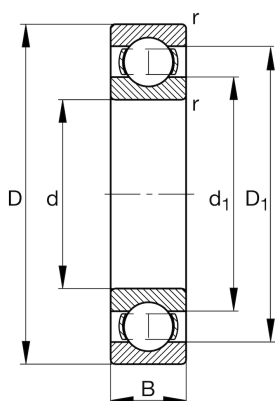
## ★ 6307

## Deep groove ball bearing

Schaeffler ID:  
0167232360000Deep groove ball bearing 63, single row,  
steel sheet metal cage

★ Preferred product

## Technical information



## Temperature range

$T_{\min}$	-30 °C	Operating temperature min.
$T_{\max}$	120 °C	Operating temperature max.
	0,447 kg	Weight

## Main Dimensions &amp; Performance Data

d	35 mm	Bore diameter
D	80 mm	Outside diameter
B	21 mm	Width
$C_r$	35.500 N	Basic dynamic load rating, radial
$C_{0r}$	19.100 N	Basic static load rating, radial
$C_{ur}$	1.290 N	Fatigue load limit, radial
$n_G$	12.300 1/min	Limiting speed
$n_{gr}$	9.900 1/min	Reference speed

## Dimensions

$r_{\min}$	1,5 mm	Minimum chamfer dimension
$D_1$	65,5 mm	Shoulder diameter outer ring
$d_1$	49,3 mm	Shoulder diameter inner ring

## Mounting dimensions

$d_{a \min}$	44 mm	Minimum diameter shaft shoulder
$D_{a \max}$	71 mm	Maximum diameter of housing shoulder
$r_{a \max}$	1,5 mm	Maximum fillet radius

## Calculation factors

$f_0$	13,1	Calculation factor
-------	------	--------------------