

FAG

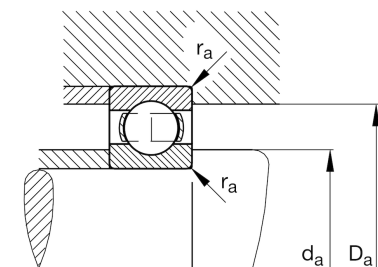
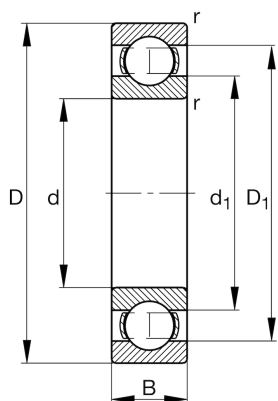
★ 6234-M

Deep groove ball bearing

Schaeffler ID:
0191065800000Deep groove ball bearing 62...-M, single
row, solid brass cage

★ Preferred product

Technical information



Temperature range

T_{\min}	-30 °C	Operating temperature min.
T_{\max}	200 °C	Operating temperature max.
	18,096 kg	Weight

Main Dimensions & Performance Data

d	170 mm	Bore diameter
D	310 mm	Outside diameter
B	52 mm	Width
C_r	225.000 N	Basic dynamic load rating, radial
C_{0r}	224.000 N	Basic static load rating, radial
C_{ur}	9.600 N	Fatigue load limit, radial
n_G	3.800 1/min	Limiting speed
n_{gr}	2.950 1/min	Reference speed

Dimensions

r_{\min}	4 mm	Minimum chamfer dimension
D_1	260,8 mm	Shoulder diameter outer ring
d_1	219 mm	Shoulder diameter inner ring

Mounting dimensions

$d_{a\min}$	187 mm	Minimum diameter shaft shoulder
$D_{a\max}$	293 mm	Maximum diameter of housing shoulder
$r_{a\max}$	3 mm	Maximum fillet radius

Calculation factors

f_0	15,3	Calculation factor
-------	------	--------------------