

FAG

## ★ 624-2Z

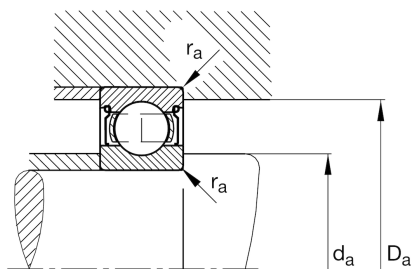
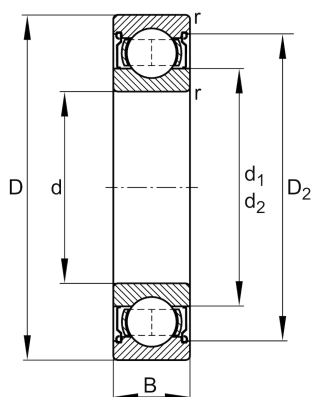
Deep groove ball bearing

Schaeffler ID:  
0382811980000

Deep groove ball bearing 62...-2Z, single row, shields, steel sheet metal cage

★ Preferred product

## Technical information



## Temperature range

$T_{\min}$	-30 °C	Operating temperature min.
$T_{\max}$	120 °C	Operating temperature max.
	3 g	Weight

## Main Dimensions &amp; Performance Data

d	4 mm	Bore diameter
D	13 mm	Outside diameter
B	5 mm	Width
$C_r$	1.380 N	Basic dynamic load rating, radial
$C_{0r}$	485 N	Basic static load rating, radial
$C_{ur}$	25,5 N	Fatigue load limit, radial
$n_G$	61.000 1/min	Limiting speed
$n_{gr}$	44.500 1/min	Reference speed

## Dimensions

$r_{\min}$	0,2 mm	Minimum chamfer dimension
$D_2$	11,35 mm	Caliber diameter outer ring
$d_2$	6 mm	Caliber diameter inner ring

## Mounting dimensions

$d_{a\min}$	5,8 mm	Minimum diameter shaft shoulder
$D_{a\max}$	11,2 mm	Maximum diameter of housing shoulder
$r_{a\max}$	0,2 mm	Maximum fillet radius

## Calculation factors

$f_0$	12,2	Calculation factor
-------	------	--------------------