



FAG

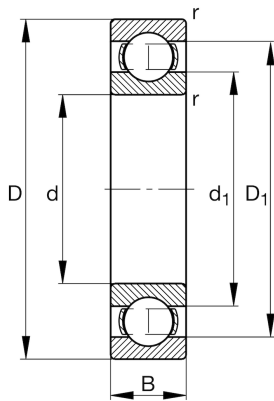
★ 16006-A

Deep groove ball bearing

Schaeffler ID:
0604615000000Deep groove ball bearing 160..-A, single
row, steel sheet metal cage

★ Preferred product

Technical information



Temperature range

| | | |
|------------|----------|----------------------------|
| T_{\min} | -30 °C | Operating temperature min. |
| T_{\max} | 120 °C | Operating temperature max. |
| | 0,081 kg | Weight |

Main Dimensions & Performance Data

| | | |
|----------|--------------|-----------------------------------|
| d | 30 mm | Bore diameter |
| D | 55 mm | Outside diameter |
| B | 9 mm | Width |
| C_r | 11.220 N | Basic dynamic load rating, radial |
| C_{0r} | 7.390 N | Basic static load rating, radial |
| C_{ur} | 300 N | Fatigue load limit, radial |
| n_G | 15.700 1/min | Limiting speed |
| n_{gr} | 10.000 1/min | Reference speed |

Dimensions

| | | |
|------------|---------|------------------------------|
| r_{\min} | 0,3 mm | Minimum chamfer dimension |
| D_1 | 47,9 mm | Shoulder diameter outer ring |
| d_1 | 39,2 mm | Shoulder diameter inner ring |

Mounting dimensions

| | | |
|-------------|--------|--------------------------------------|
| $d_{a\min}$ | 32 mm | Minimum diameter shaft shoulder |
| $D_{a\max}$ | 53 mm | Maximum diameter of housing shoulder |
| $r_{a\max}$ | 0,3 mm | Maximum fillet radius |

Calculation factors

| | | |
|-------|------|--------------------|
| f_0 | 15,3 | Calculation factor |
|-------|------|--------------------|