

## ★ NX10-Z-XL

Needle roller/axial ball bearing

Schaeffler ID:  
0507791500000

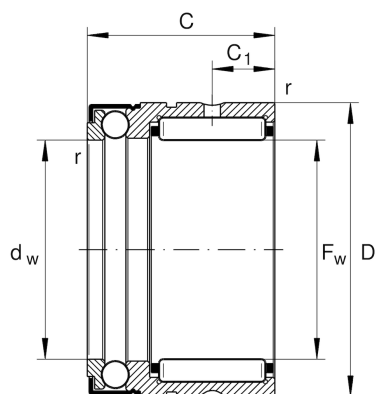
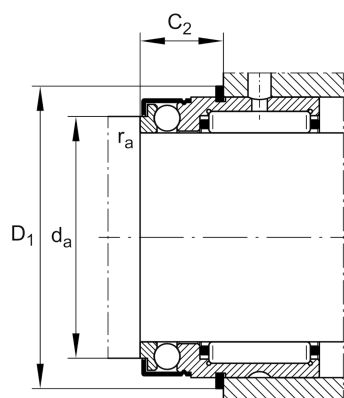
Needle roller/axial ball bearings NX..-Z, single direction axial component, for grease lubrication

★ Preferred product

X-life

### Technical information

2)



#### Temperature range

|            |        |                            |
|------------|--------|----------------------------|
| $T_{\min}$ | -30 °C | Operating temperature min. |
| $T_{\max}$ | 120 °C | Operating temperature max. |
|            | 21,3 g | Weight                     |

#### Main Dimensions & Performance Data

|          |              |                                   |
|----------|--------------|-----------------------------------|
| $F_w$    | 10 mm        | Bore diameter                     |
| $D$      | 19 mm        | Outside diameter                  |
| $C$      | 18 mm        | Height                            |
| $C_r$    | 5.000 N      | Basic dynamic load rating, radial |
| $C_{0r}$ | 3.700 N      | Basic static load rating, radial  |
| $C_a$    | 4.600 N      | Basic dynamic load rating, axial  |
| $C_{0a}$ | 7.200 N      | Basic static load rating, axial   |
| $C_{ur}$ | 730 N        | Fatigue load limit, radial        |
| $C_{ua}$ | 330 N        | Fatigue load limit, axial         |
| $n_G$    | 11.000 1/min | Limiting speed                    |

#### Dimensions

|            |        |                               |
|------------|--------|-------------------------------|
| $C_1$      | 4,7 mm | Distance to lubrication hole  |
| $C_2$      | 4,7 mm | Distance to lubrication hole  |
| $d_w$      | 10 mm  | Bore diameter of shaft washer |
| $r_{\min}$ | 0,3 mm | Minimum chamfer dimension     |

#### Mounting dimensions

|              |         |                                   |
|--------------|---------|-----------------------------------|
| $d_a$        | 14,6 mm | Mounting dimension shaft shoulder |
| $r_{a \max}$ | 0,3 mm  | Maximum recess radius             |
| $D_1$        | 21,9 mm | Connection diameter snap ring     |
| $C_2$        | 10 mm   | Connection width with snap ring   |

**Additional information**

|                  |                         |
|------------------|-------------------------|
| IR6X10X10-IS1-XL | Suitable inner rings IR |
| WR19, SW19       | Snap ring               |