



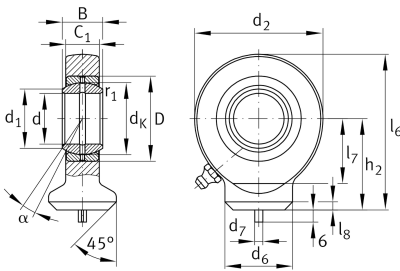
## GK45-DO

### Rod end

Schaeffler ID:  
0066358140000

Hydraulic rod end, with circular welding face, requiring maintenance, sliding contact surface: steel/steel, DIN ISO 12240-4, dimension series E, type S, open design

### Technical information



### Main Dimensions & Performance Data

d	45 mm	Bore diameter bearing
D	68 mm	Outside diameter bearing
B	32 mm	Width inner ring,
C <sub>r</sub>	128.000 N	Basic dynamic load rating, radial
C <sub>0r</sub>	208.000 N	Basic static load rating, radial
G <sub>r</sub>	0,043 - 0,12 mm	Radial Clearance
	1,89 kg	Weight

### Dimensions

d <sub>K</sub>	60 mm	Ball diameter
d <sub>1</sub>	50,7 mm	Outer flange diameter inner ring
d <sub>2</sub>	102 mm	Outer eye diameter
d <sub>6</sub>	58 mm	Welding Shank Diameter
h <sub>2</sub>	77 mm	Shank Length Welding Head
C <sub>1</sub>	27 mm	Width of the rod end
α	7 °	Tilt angle
l <sub>6</sub>	128 mm	Total length welding head
l <sub>7</sub>	52 mm	Distance drilling with/shaft start
l <sub>8</sub>	5 mm	Chamfer
d <sub>7</sub>	6 mm	Centering pin diameter
d <sub>OT</sub>	0 mm	Bore diameter bearing, upper tolerance
d <sub>UT</sub>	-0,012 mm	Bore diameter bearing, lower tolerance
B <sub>OT</sub>	0 mm	Width inner ring, upper tolerance
B <sub>UT</sub>	-0,12 mm	Width inner ring, lower tolerance

### Mounting dimensions

r <sub>1smin</sub>	0,6 mm	Edge Spacing
--------------------	--------	--------------

**Temperature range**

T <sub>min</sub>	-60 °C	Operating temperature min.
T <sub>max</sub>	200 °C	Operating temperature max.