



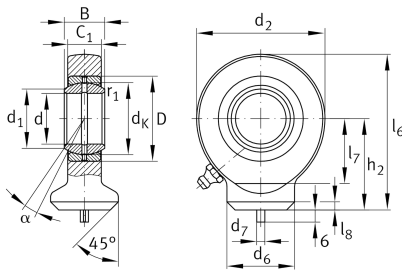
## GK60-DO

### Rod end

Schaeffler ID:  
0066309950000

Hydraulic rod end, with circular welding face, requiring maintenance, sliding contact surface: steel/steel, DIN ISO 12240-4, dimension series E, type S, open design

### Technical information



### Main Dimensions & Performance Data

d	60 mm	Bore diameter bearing
D	90 mm	Outside diameter bearing
B	44 mm	Width inner ring,
$C_r$	245.000 N	Basic dynamic load rating, radial
$C_{0r}$	389.000 N	Basic static load rating, radial
$G_r$	0,043 - 0,12 mm	Radial Clearance
	4,3 kg	Weight

### Dimensions

$d_K$	80 mm	Ball diameter
$d_1$	66,8 mm	Outer flange diameter inner ring
$d_2$	135 mm	Outer eye diameter
$d_6$	70 mm	Welding Shank Diameter
$h_2$	100 mm	Shank Length Welding Head
$C_1$	38 mm	Width of the rod end
$\alpha$	6 °	Tilt angle
$l_6$	167,5 mm	Total length welding head
$l_7$	75 mm	Distance drilling with/shaft start
$l_8$	8 mm	Chamfer
$d_7$	6 mm	Centering pin diameter
$d_{OT}$	0 mm	Bore diameter bearing, upper tolerance
$d_{UT}$	-0,015 mm	Bore diameter bearing, lower tolerance
$B_{OT}$	0 mm	Width inner ring, upper tolerance
$B_{UT}$	-0,15 mm	Width inner ring, lower tolerance

### Mounting dimensions

$r_{1smin}$	1 mm	Edge Spacing
-------------	------	--------------

**Temperature range**

T <sub>min</sub>	-60 °C	Operating temperature min.
T <sub>max</sub>	200 °C	Operating temperature max.